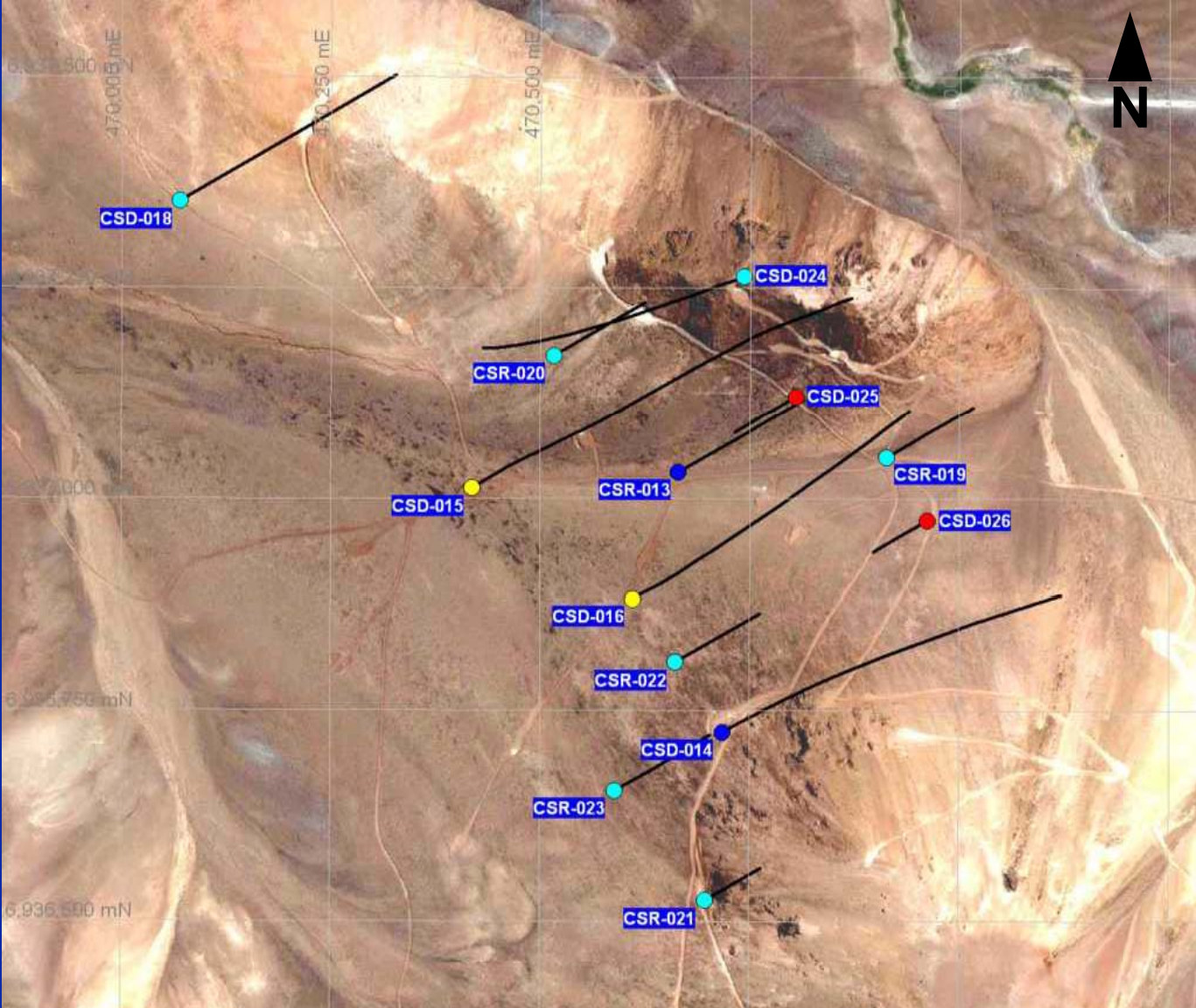



# Caspiche Drilling Update – April 29, 2008



 <p><b>500 meters</b> <b>1500 feet</b></p>	<ul style="list-style-type: none"><li>● Location of drill hole with new assays.</li><li>● Assays pending</li></ul>	<ul style="list-style-type: none"><li>● Holes In Progress</li><li>● Previously reported holes.</li></ul>
---	--	--